

**RUSH  
WITT &  
WILSON**

**WITT &  
WILSON**

FOR SALE

01424 225588  
rushwittwilson.co.uk



**31 Martyns Way, Bexhill-On-Sea, East Sussex TN40 2SE  
£300,000**

**A bright and spacious detached chalet bungalow located in a popular residential area of Bexhill within close distance to Ravenside Retail Park and the beach. the accommodation comprises two double bedrooms, lounge, separate dining room, fitted kitchen, lean-to/utility room and separate W.C to the ground floor with a further two double bedrooms and modern fitted family bathroom to the first floor. Externally, the property offers gardens to the front and rear, driveway providing off road parking for multiple vehicles and single garage. This property is offered with no onward chain.**



### **Hallway**

Radiator, under-stairs storage cupboard, stairs leading to first floor and access to all rooms on the ground floor.

### **Lounge**

16'6" x 11'10" (5.03 x 3.61)

Front aspect double glazed window overlooking front garden and also a side aspect double glazed window, two radiators, feature gas fireplace and door leading to dining room.

### **Dining Room**

9'10" x 9'4" (3 x 2.84)

Front aspect double glazed window overlooking front garden, radiator, door leading to:

### **Kitchen**

11'3" x 9'10" (3.43 x 3)

Side aspect double glazed window with obscured glass panelled double glazed door leading to and looking out onto lean to at the side of the property. Radiator. Kitchen comprising a range of matching wall and base level units, roll top work surfaces, space for free standing cooker and oven, plumbing space for dishwasher and part tiled walls.

### **Lean To Utility Room**

Single glazed windows to the front with wooden timber doors leading to the front of the property and also leading to the rear of the property. Plumbing and space for a washing machine, power and space for free standing fridge/freezer. Roll top work surface with storage space beneath.

### **Bedroom Two**

10'11" x 10'0" (3.33 x 3.05)

Side aspect double glazed window overlooking side/rear garden, radiator, fitted storage cupboards with hanging space and shelving and storage cupboard above.

### **Bedroom Three**

10'9" x 9'11" (3.28 x 3.02)

Side aspect double glazed window overlooking side/rear garden, radiator, fitted wardrobe with wooden sliding doors providing shelving space and hanging space with storage cupboard above

### **Downstairs W.C.**

Rear aspect obscured double glazed window, low level w.c.

### **First Floor Landing**

Airing cupboard, hot water cylinder and slatted shelving and access to loft.

### **Bedroom Four**

13'0" x 7'0" (3.96 x 2.13)

extending to 10'9 at doorway (3.28m). Double glazed window, radiator, door with access to eaves providing storage.

### **Bedroom One**

13'9" x 13'0" (4.19 x 3.96)

Side aspect double glazed window, radiator, fitted wardrobe with wooden sliding doors providing hanging space and shelving

### **Family Bathroom**

Side aspect obscured double glazed window, radiator. White bathroom suite comprising low level w.c., pedestal mounted wash hand basin with stainless steel mixer tap and fitted shower cubicle with electric power shower and glass sliding doors. Part tiled walls and a wall mounted bathroom light with shaver point.

### **OUTSIDE**

#### **Rear Garden**

Accessed via the lean-to/utility room at the side which leads onto the: Rear Garden.

Mainly laid to lawn with patio laid area, mature plant and shrub borders, bordered bay panel enclosed fencing, timber garden shed and door with access to rear of garage.

#### **Front Garden**

To the front of the property it is mainly laid to lawn with mature plant and shrub borders, driveway providing off road parking for multiple vehicles with driveway leading to garage.

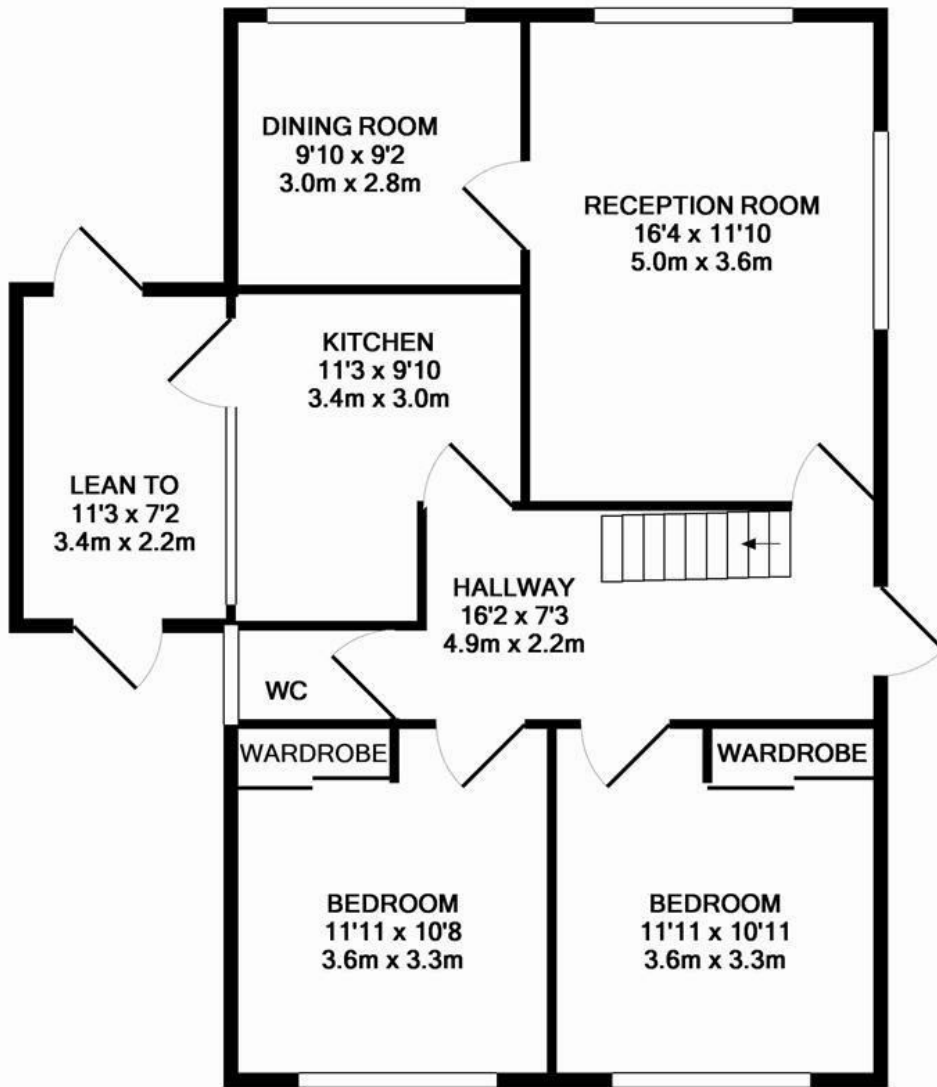
#### **Garage**

Up and over door, housing a gas meter with light and power.

#### **Agents Note**

None of the services or appliances mentioned in these sale particulars have been tested. It should also be noted that measurements quoted are given for guidance only and are approximate and should not be relied upon for any other purpose.





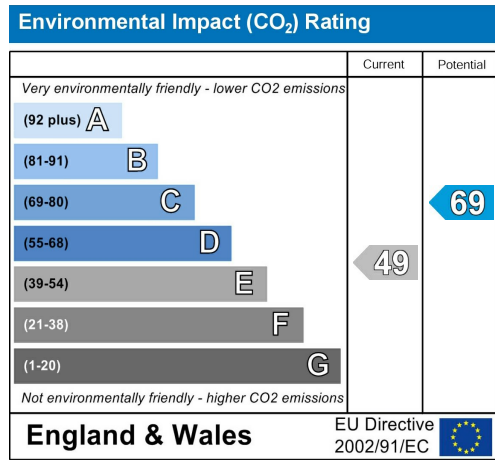
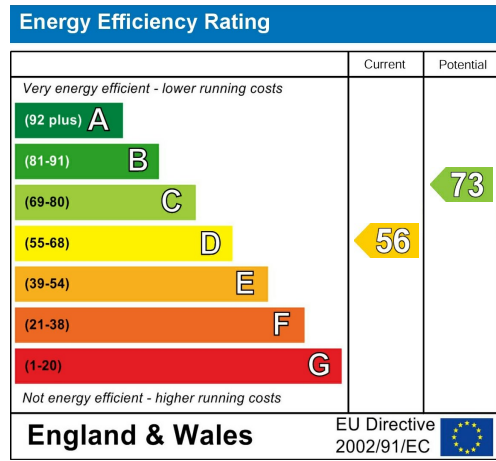
GROUND FLOOR  
APPROX. FLOOR  
AREA 850 SQ.FT.  
(78.9 SQ.M.)



1ST FLOOR  
APPROX. FLOOR  
AREA 441 SQ.FT.  
(40.9 SQ.M.)

TOTAL APPROX. FLOOR AREA 1290 SQ.FT. (119.9 SQ.M.)

Whilst every attempt has been made to ensure the accuracy of the floor plan contained here, measurements of doors, windows, rooms and any other items are approximate and no responsibility is taken for any error, omission, or mis-statement. This plan is for illustrative purposes only and should be used as such by any prospective purchaser. The services, systems and appliances shown have not been tested and no guarantee as to their operability or efficiency can be given



**RUSH  
WITT &  
WILSON**

**Residential Estate Agents  
Lettings & Property Management**



**3 Devonshire Road  
Bexhill-on-Sea  
East Sussex  
TN40 1AH  
Tel: 01424 225588  
bexhill@rushwittwilson.co.uk  
www.rushwittwilson.co.uk**